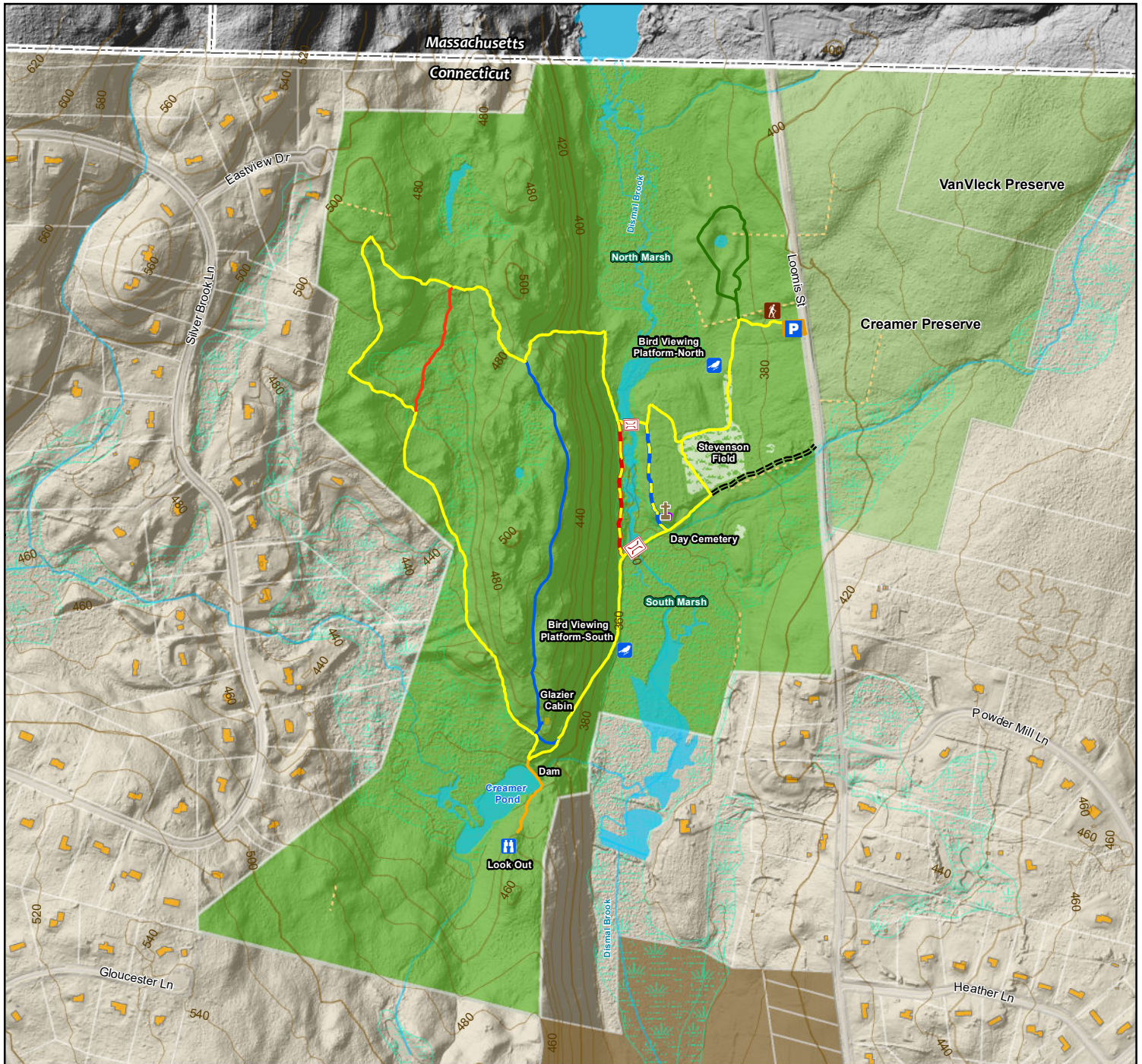
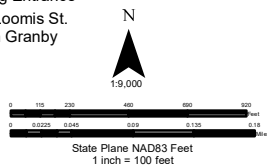


Granby Land Trust Property

Dismal Brook Wildlife Preserve



- Granby Land Trust Preserve
- Town of Granby
- Private Property
- Buildings
- Water
- Wetland
- Parcels
- Stone Walls
- Orange Trail (0.09 mi)
- Blue Trail (0.43 mi)
- Red Trail (0.13 mi)
- Green Trail (0.28 mi)
- Yellow Trail (1.96 mi)
- Yellow-Red Trail (0.13 mi)
- Yellow-Blue Trail (0.11 mi)
- Bridge
- Hiking Entrance
- 253 Loomis St. North Granby
- Maintenance Road



Source:
Parcels, Topo, and Granby Land Trust data obtained from the Town of Granby. Planimetrics and 2016 LIDAR obtained from CT ECO.

Disclaimer:
This map is for illustration purposes only. The Granby Land Trust, participating local municipalities and its mapping contractors assume no legal responsibilities for the information contained herein.

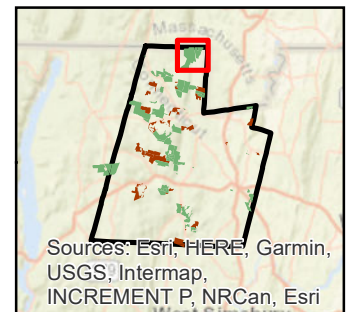
E:\Clients\GranbyLandTrust\GIS\Mapdocument\GLT_68_DismalBrook_Wildlife_Preserve_PublicTrail.mxd



Avenza Maps App QR Code
Download Links

Download on the App Store

GET IT ON Google play



Map Produced By: SHERRY GEOSPATIAL, LLC
Creating a New World